

August 2021 – Version 1.0

German School of Fremont (GSF) at Azevada Elementary School

Safety Protocol for the return to school (informed by the Fremont Unified School District Site Protocols for the return to school, Revised 8.27.2021)

No in-person adult classes will be offered. Parents/ guardians are responsible for following these protocols and preparing their child(ren) to follow these protocols.

FACE COVERINGS/MASKS

1. All GSF students, teachers, staff, and designated volunteers and parents must wear appropriate face coverings (masks not gaiters) over mouth and nose and fitting snugly against the side of the face while on Azevada Elementary School premises, which includes the parking lot.
2. GSF teachers, staff and volunteers will enforce the mask mandate and proper wearing of masks, but this is not guaranteed, and there is always a risk of a child not wearing their mask (properly) at all times.
3. GSF reserves the right to remove a child from GSF classes (refund will be granted) if the child cannot follow the mask requirement.
4. If a mask break is needed by a student, the teacher will ask the student to exit the classroom and remain outdoors, in sight of the teacher, while removing their mask. Mask breaks are permitted at any time, as necessary.
5. Due to our school's limited resources (including the absence of a school nurse) as well as existing guidelines by FUSD to rent their facilities, we are unable to make any exceptions to this rule, which includes GSF not being able to accept doctor's notices for mask exemption. We regret not being able to accommodate all students to in-person classes. We do offer online alternatives for those who cannot meet the mask mandate. Please contact GSF for more information on (private) online class offerings for children.

ACCESS TO SCHOOL PREMISES BEYOND THE GATES – DROP-OFF AND PICK-UP

6. Only registered students for in-person class, teachers, GSF staff, and designated volunteers will be permitted to enter the school premises.
7. Drop-off starts/ gates open at 9:20am.
8. Pick up ends promptly at 12:05pm.
9. Entrance to and exit from the school will be through the far-right entrance gate (access to in-school playground). Younger children will be kept in the playground area under adult supervision, while older children (e.g., classes C3, C4) will be granted access to the inner outdoor courtyard area where they can wait until their teacher brings them to their classrooms. Seating/ tabletops have been marked to remind students to spread out while they sit together.
10. Parents/ guardians who drop off students will drop them off and pick them up at that gate.
11. Children will remain in the playground area outdoors until the teacher arrives. Then they will form a line next to the teacher and follow the teacher into the classroom.
12. Do not congregate at the gate during drop-off and pick-up.
13. To help limit the number of people on campus, we ask that only ONE family member complete drop-off and pick-up.

14. Form a line alongside the school building (not into the parking lot) if drop-off/ pick-up congestion occurs.
15. If you are late (after 9:35am), please enter through the gate that leads to the cafeteria. There will always be a GSF staff member or volunteer present in the cafeteria area to assist late comers/ early pick-ups.
16. If it is raining: Please enter through the gate that leads to the cafeteria.

BEFORE LEAVING HOME FOR SCHOOL

17. Students must complete a home-based health screening – see Annex 1.
18. If “yes” is answered to any of the screener questions, DO NOT report to school and please contact your medical professional as needed.
19. If a student arrives for class, this means the parent/guardian has performed the health screening and attests to the good health of the child/ student.

CONTACT TRACING – SOCIAL DISTANCING

20. Parents/guardians and GSF affiliates (meaning teachers, GSF staff, designated volunteers) will notify GSF (email: contact@gsfremont.org and in addition: teachers inform the GSF Head Teacher; all others call tel.: (510) 353-3585) immediately if the student or GSF affiliate tested positive for COVID or if one of the household members or non-household close contacts tested positive for COVID.
21. Please be aware of this risk: Students and GSF affiliates will likely not be separated/ socially distanced while wearing masks (which means at all times other than during snack time). It is hard to enforce separation in a classroom setting, especially with younger children. Students from all classes will be in contact with each other during school hours, especially at drop-off and pick-up (e.g., playing at the playground).
22. During snack time (approx. 15 min timeframe), each class will separately eat their snack and stay separated from other classes/ students outside the class while not wearing their mask and eating their snack. Seating/ tabletops have been marked to remind students to spread out while they sit together, but enforcement is not guaranteed.
23. If there is a confirmed case of COVID or contact with COVID affecting the household of GSF students and affiliates, GSF will:
 - a) Inform all in-person student families (no matter the class) using the email provided to GSF.
 - b) To maintain privacy, only the affected classroom will be identified if either a student or a teacher is directly or indirectly affected by COVID (e.g., “A person in class C3 has been diagnosed with COVID.”; “A person has been in contact with a COVID positive individual in class C3.”).
 - c) If another GSF affiliate is affected by COVID, the notification will state: “A person other than a student or teacher, but affiliated with GSF has been diagnosed with COVID”; “A person other than a student or teacher, but affiliated with GSF has been in contact with a COVID positive individual.”
24. GSF will evaluate the situation and may close the school or a specific class/es for 1 week of teaching.
25. GSF reserves the right to – at any time during the school year – revert back to online classes only. In-person teaching during COVID is new to GSF and we will have to

continually evaluate this choice, keeping the health of and risks to the GSF community in mind.

SNACK TIME

26. Students will only be allowed to remove their masks when they are actively eating/drinking their snacks.
27. Snack time is only once and only for 15 minutes.
28. When seated to eat their snack, students will be seated outdoors (under good weather conditions). Seating/ tabletops have been marked to remind students to spread out while they sit together, but enforcement is not guaranteed.
29. If raining: GSF will try to find covered outdoor seating or seat students in the cafeteria with all cafeteria doors open and students spread out while they sit together, but enforcement is not guaranteed.
30. Once students have finished eating, they will be reminded to put their face covering back on.
31. At the beginning, during, and after recess / snack time, students will have access to and will be encouraged to use hand washing and hand sanitizing stations.
32. Snacks during this time of COVID will be limited. Students are encouraged to bring their own snacks and are not permitted to share with others. GSF will only offer a non-water drink, packaged crackers, packaged cookies/bar, and packaged trail mix. Students must bring their own water bottle to school.

HEALTH AT SCHOOL

33. Sanitizing wipes and hand sanitizer will be provided in each classroom.
34. At minimum, before class, before snack, after snack and at class closing, students will be required to wash their hands.
35. GSF does not have medical support (school nurse) during school hours. This means that if any student during school hours starts to develop COVID symptoms (see Annex 1) or repeated sneezing (not explicitly included as a symptom but GSF will include it due to possible spread of disease) or feels unwell, the teacher will inform GSF staff who will contact the parent/ guardian immediately.
36. The child will be isolated.
37. The child must be picked up within 30min of receipt of call or by 12:05pm, whichever is earlier.
38. If your child experiences COVID symptoms or was exposed to COVID, please use the guidance in Annex 2 to inform next steps. Also follow point 20. about GSF notification.

Daily COVID-19 Health Screening



To be asked daily for every student prior to in-person program participation.

Exposure Check		Within the past 10 days, has the student had close contact with anyone in the household who was diagnosed with COVID-19 or who had a test confirming they have the virus?	<input type="checkbox"/> Yes <input type="checkbox"/> No	
		Does the student live in the same home with someone who has been in isolation or who had a positive test for COVID-19 within the past 14 days ?	<input type="checkbox"/> Yes <input type="checkbox"/> No	
		Within the last 14 days, has the student had close contact with someone outside the household who was diagnosed with COVID-19 or who had a test confirming they have the virus?	<input type="checkbox"/> Yes <input type="checkbox"/> No	
Symptom and Visual Check		In the past 10 days was the student diagnosed with or have a test confirming they have COVID-19?	<input type="checkbox"/> Yes <input type="checkbox"/> No	
	<p>Since the student was last at school (or in the last 10 days if the student has been out of school longer than 10 days), has the student had any of these symptoms, new or different from what they usually have, or not explained by another reason?</p> <p>*If student has any of these listed symptoms or history of COVID-19 within the last 10 days, please send them home with requirements for returning to school.</p>		<input type="checkbox"/> Yes <input type="checkbox"/> No	
		Shortness of breath or difficulty breathing		Sore throat
		Fever or chills		New loss of taste or smell
		Nausea or vomiting		Cough
	Diarrhea		Headache	
Temp Check		Did you do a temperature check with a thermometer? If not, school staff may check temperature upon student arrival. A fever is a temperature of 100°F (37.8°C) or higher	<input type="checkbox"/> Yes <input type="checkbox"/> No	

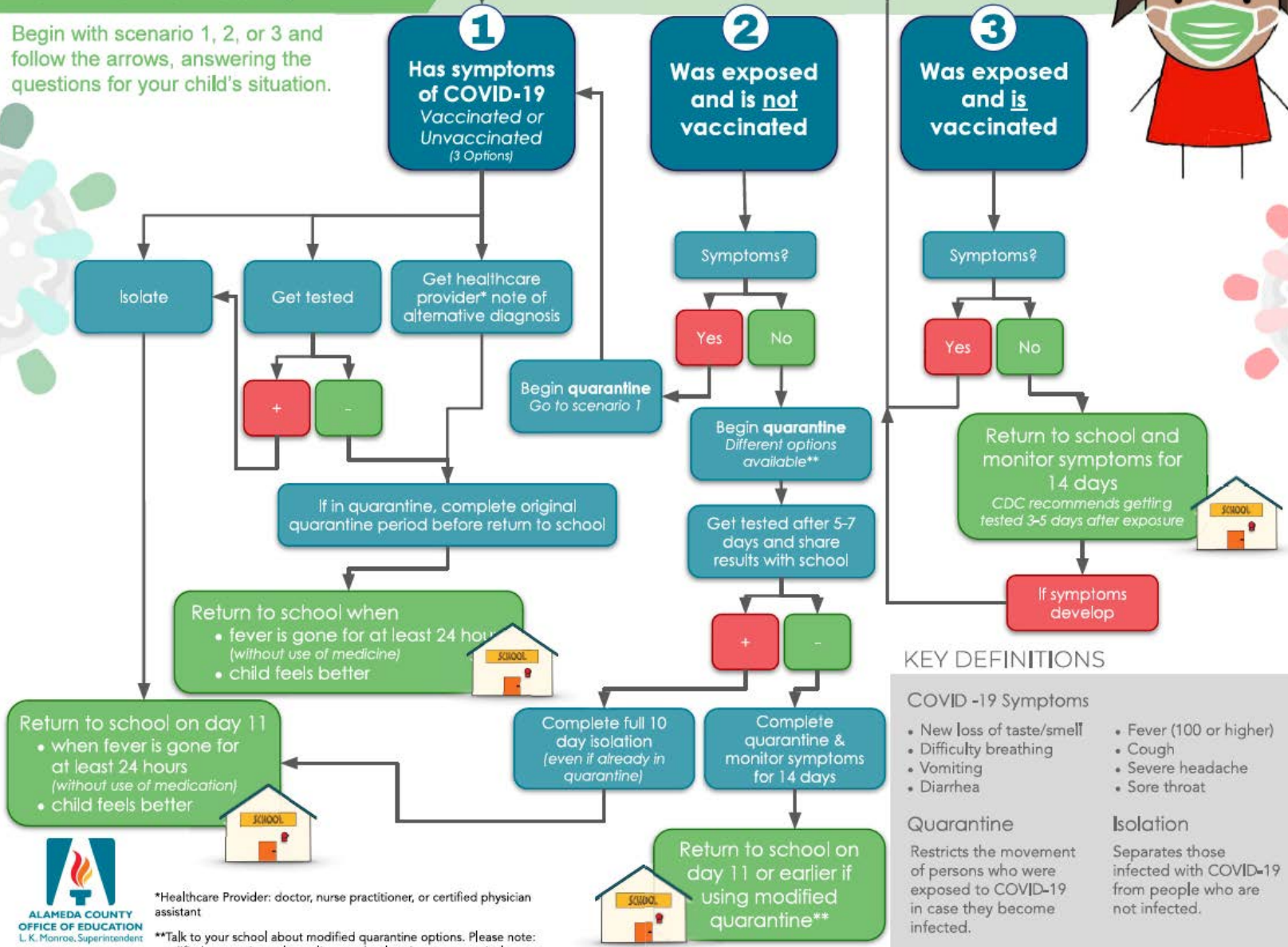
Close contact means that the student was within 6 feet of a COVID+ person for 15 minutes or longer (including multiple shorter periods that add up to 15 minutes) **EVEN IF** both the student and the other person were wearing masks. Close contact can also mean that the student had a major exposure to the COVID+ person's respiratory droplets – for example, the sick person coughed directly on the student.

COVID-19 Flowchart for Parents

Updated 8/5/21

MY CHILD...

Begin with scenario 1, 2, or 3 and follow the arrows, answering the questions for your child's situation.



KEY DEFINITIONS

COVID -19 Symptoms

- New loss of taste/smell
- Difficulty breathing
- Vomiting
- Diarrhea
- Fever (100 or higher)
- Cough
- Severe headache
- Sore throat

Quarantine

Restricts the movement of persons who were exposed to COVID-19 in case they become infected.

Isolation

Separates those infected with COVID-19 from people who are not infected.



*Healthcare Provider: doctor, nurse practitioner, or certified physician assistant

**Talk to your school about modified quarantine options. Please note: modified quarantine only applies to school and not extracurriculars or sports